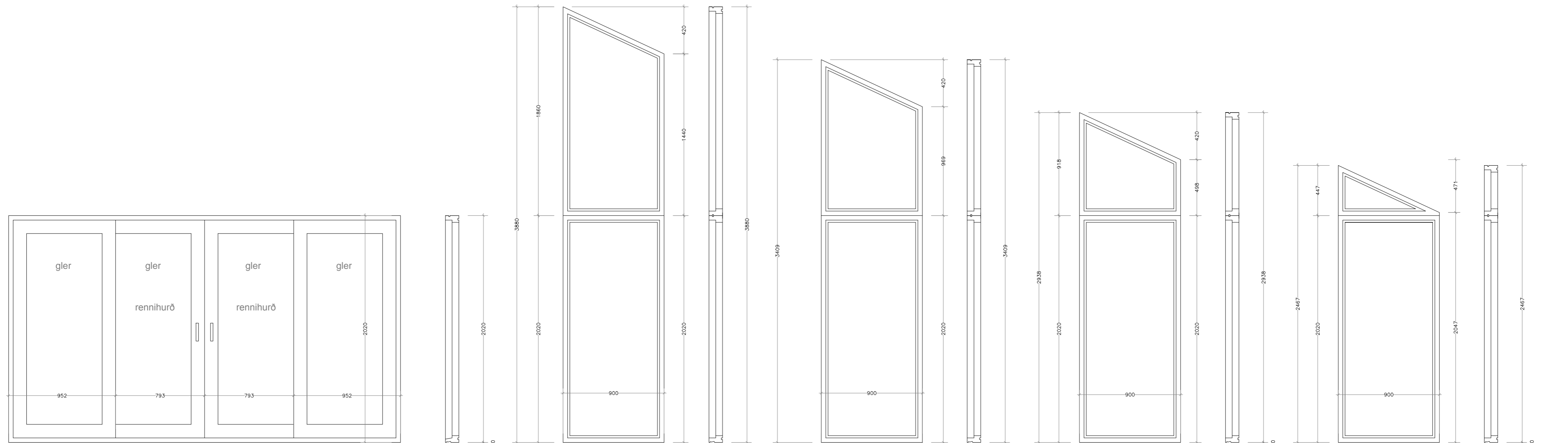
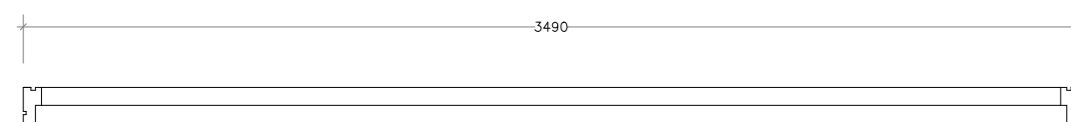


GLUGGAR OG HURÐIR M.K. 1/25



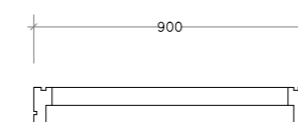
G12 1 stk. (rennihurð stofu)

fl.mál: 7,05 m²
ummál: 11,02 m



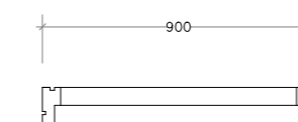
G13 1 stk. (stofa)

fl.mál: 3,30 m²
ummál: 9,23 m



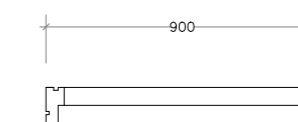
G14 1 stk. (stofa)

fl.mál: 2,88 m²
ummál: 8,29 m



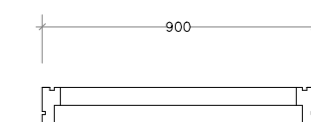
G15 1 stk. (stofa)

fl.mál: 2,46 m²
ummál: 7,35 m



G16 1 stk. (stofa)

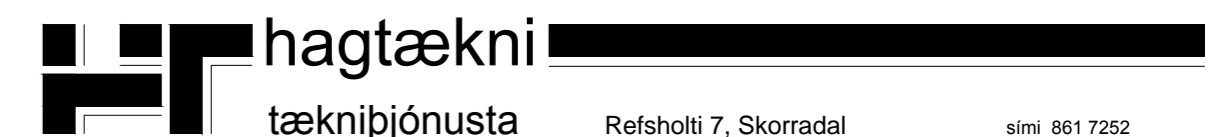
fl.mál: 2,03 m²
ummál: 6,41 m



SKÝRINGAR

Gluggar skulu vera af viðurkenndri gerð. Gluggaframleiðandi skal uppfylla styrkleikakröfur og kröfur um hámarkssvignun gluggapósta.

Gler skal vera háeinangrandi K-gler.



VERK	Birkibraut 7, Biskupstungum	VERK NR.	333
TEIKNING	Sumarhús Gluggar 1/25	TEIKN. NR.	109
DAGS.	10. okt. 2012	TEIKNAD.	Ingólfur Margeirsson 070252-3099
BREYTT		SAMB.	

Refsholti 7, Skorradal

sími 861 7252