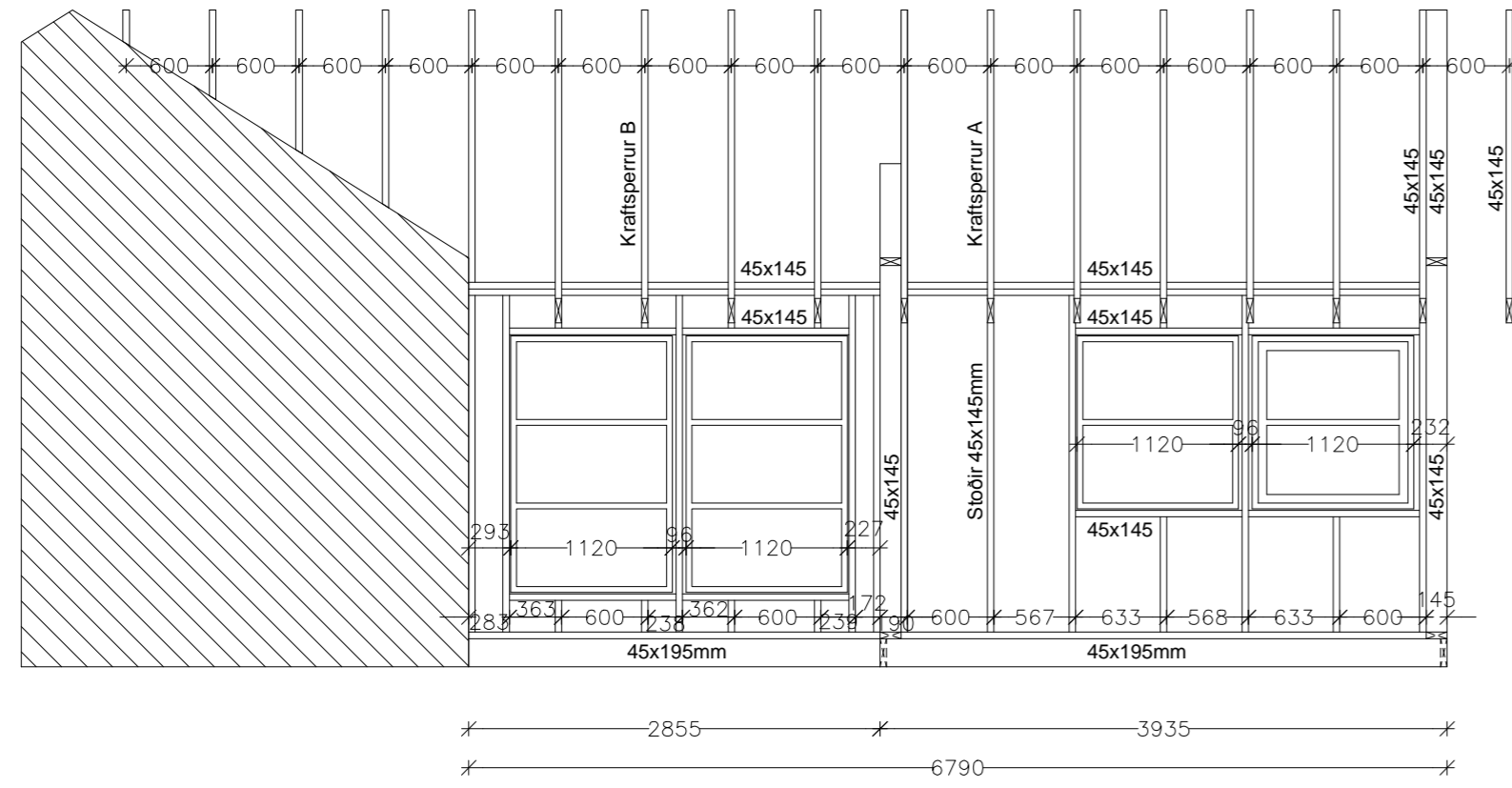
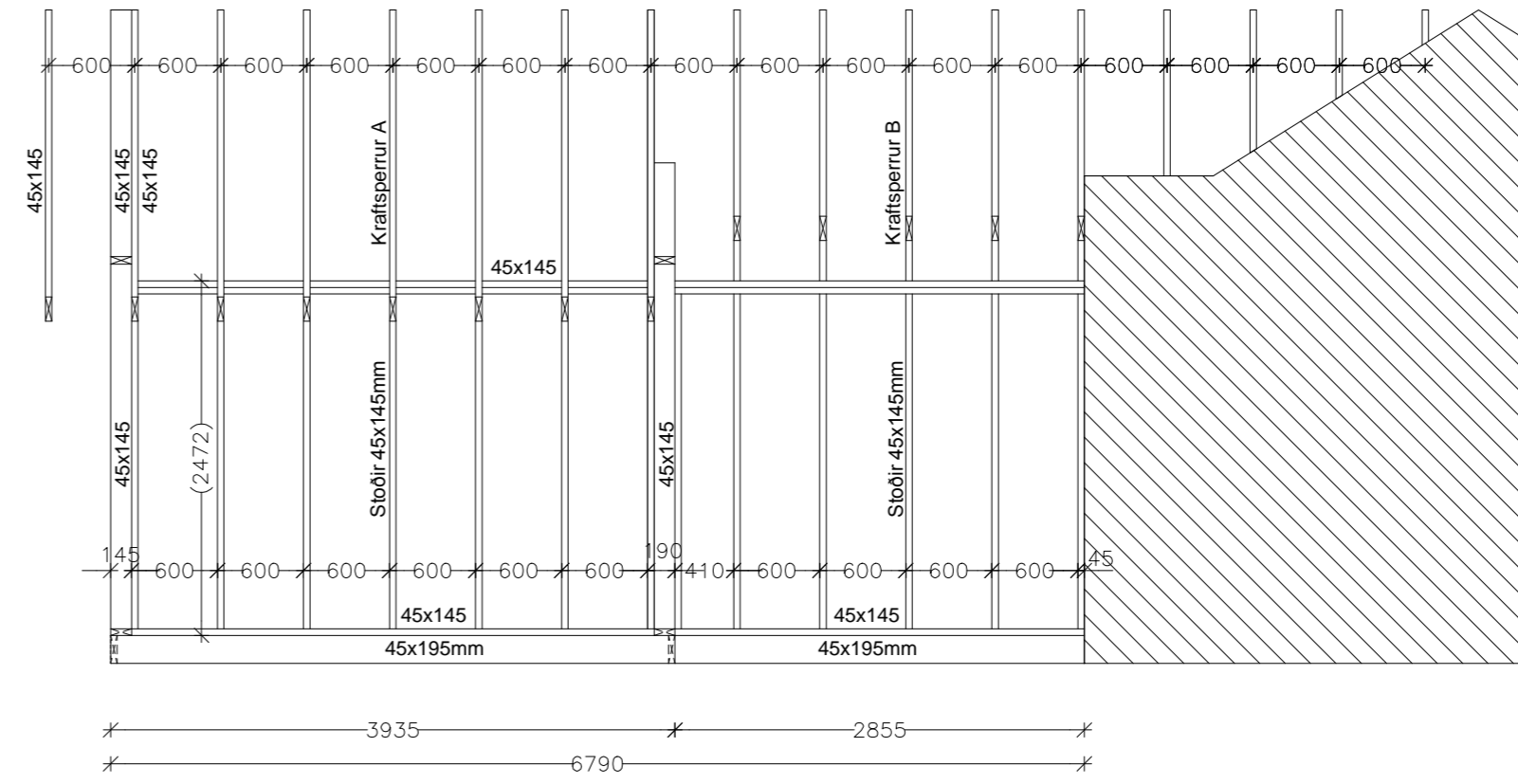


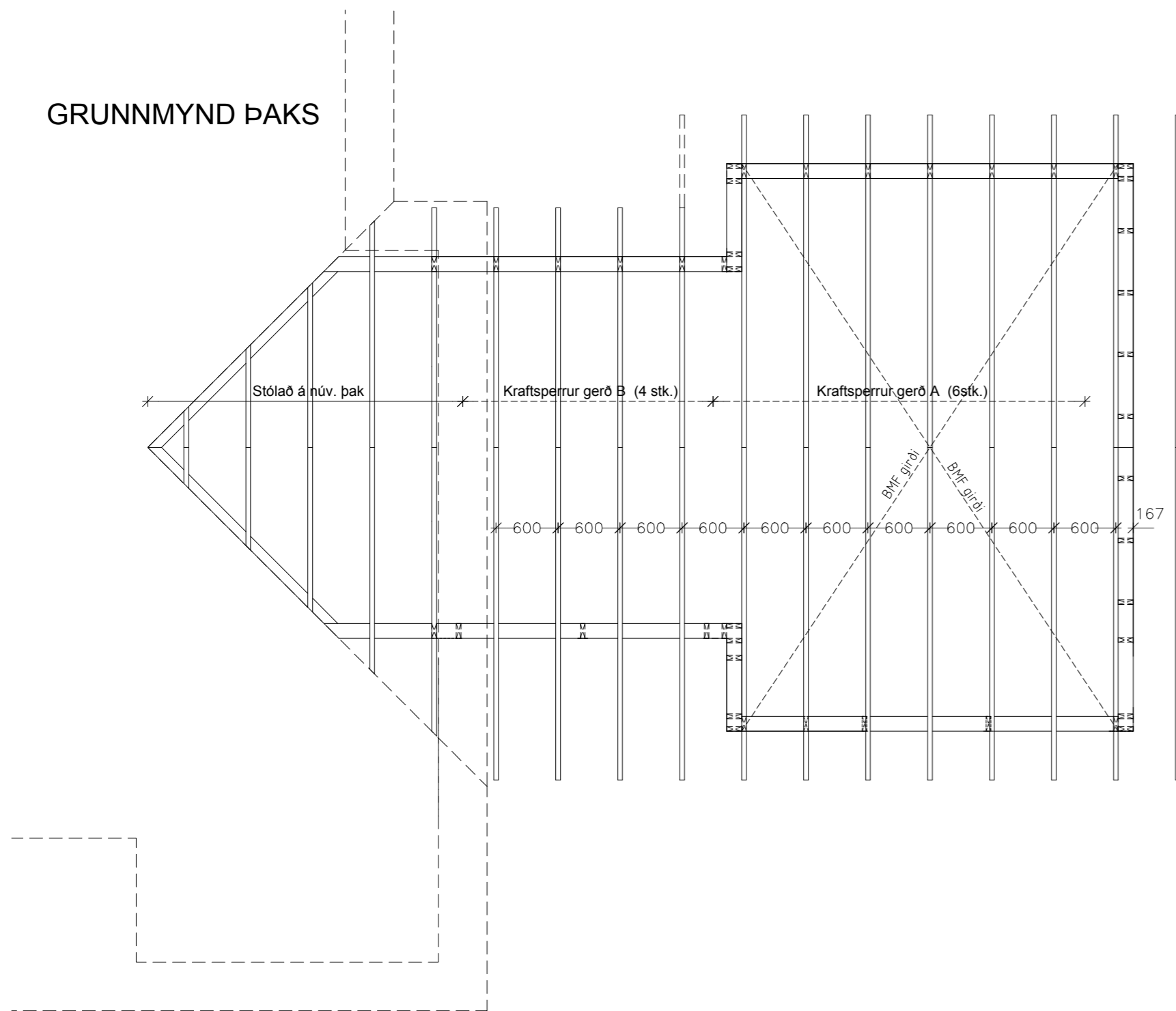
SUÐUR



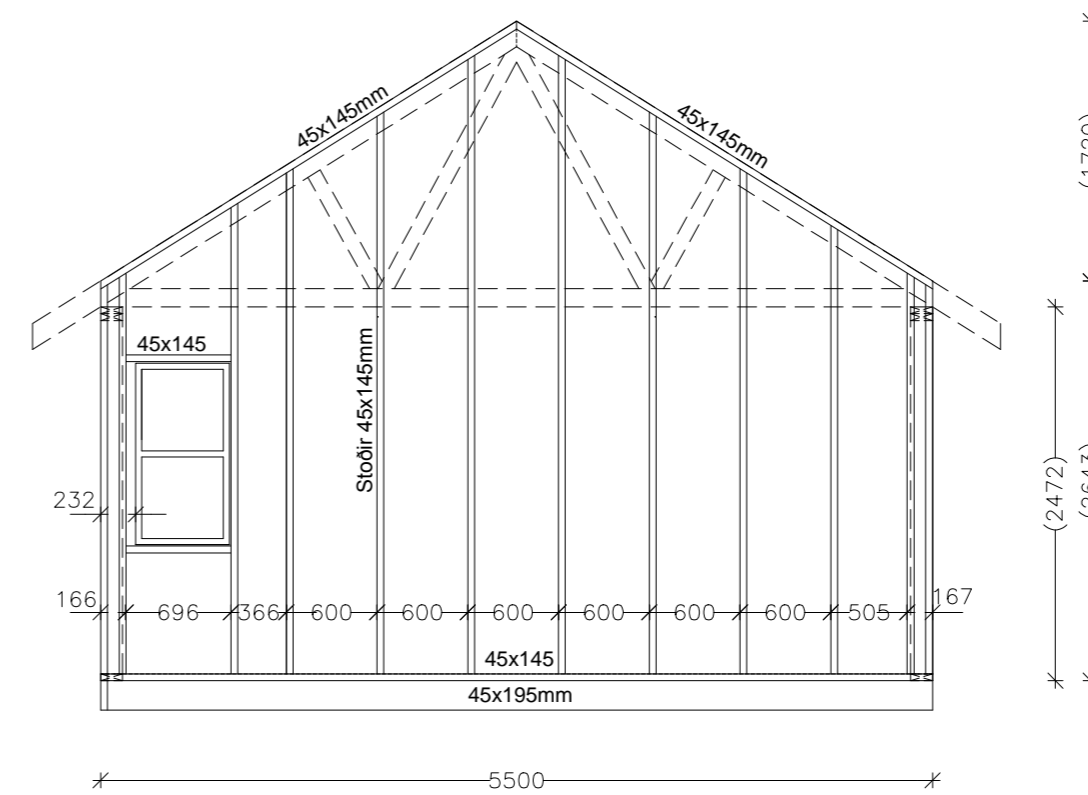
NORÐUR



GRUNNMYND ÞAKS



AUSTUR



SKÝRINGAR

Varðandi hæð á gólfi, veggjum og þaki skal hafa hliðsjón af núverandi húsi
 Burðarviðir eru í gæðaflokki T1
 Allar festingar og tengi skulu vera galvanhúðaðar.