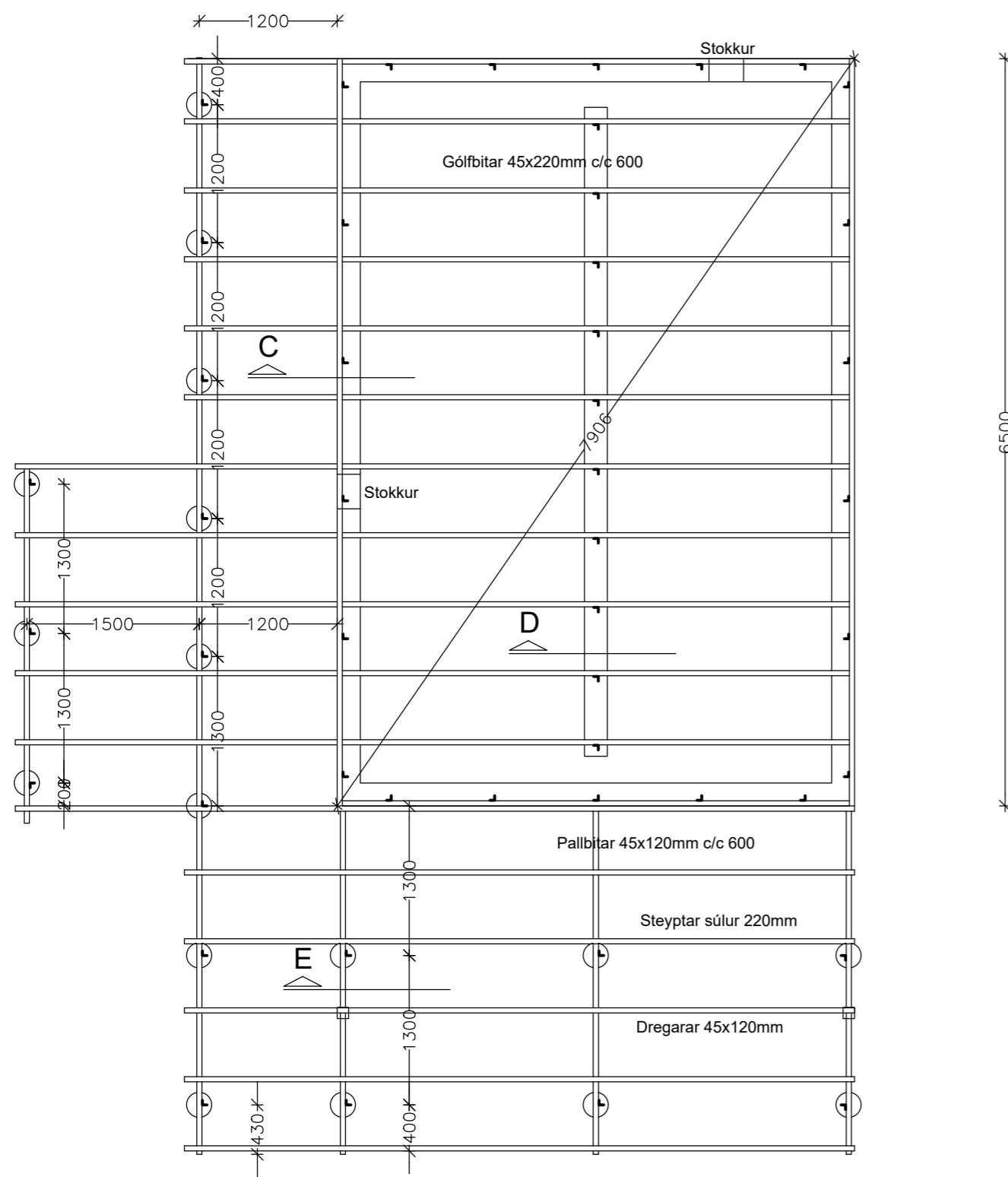
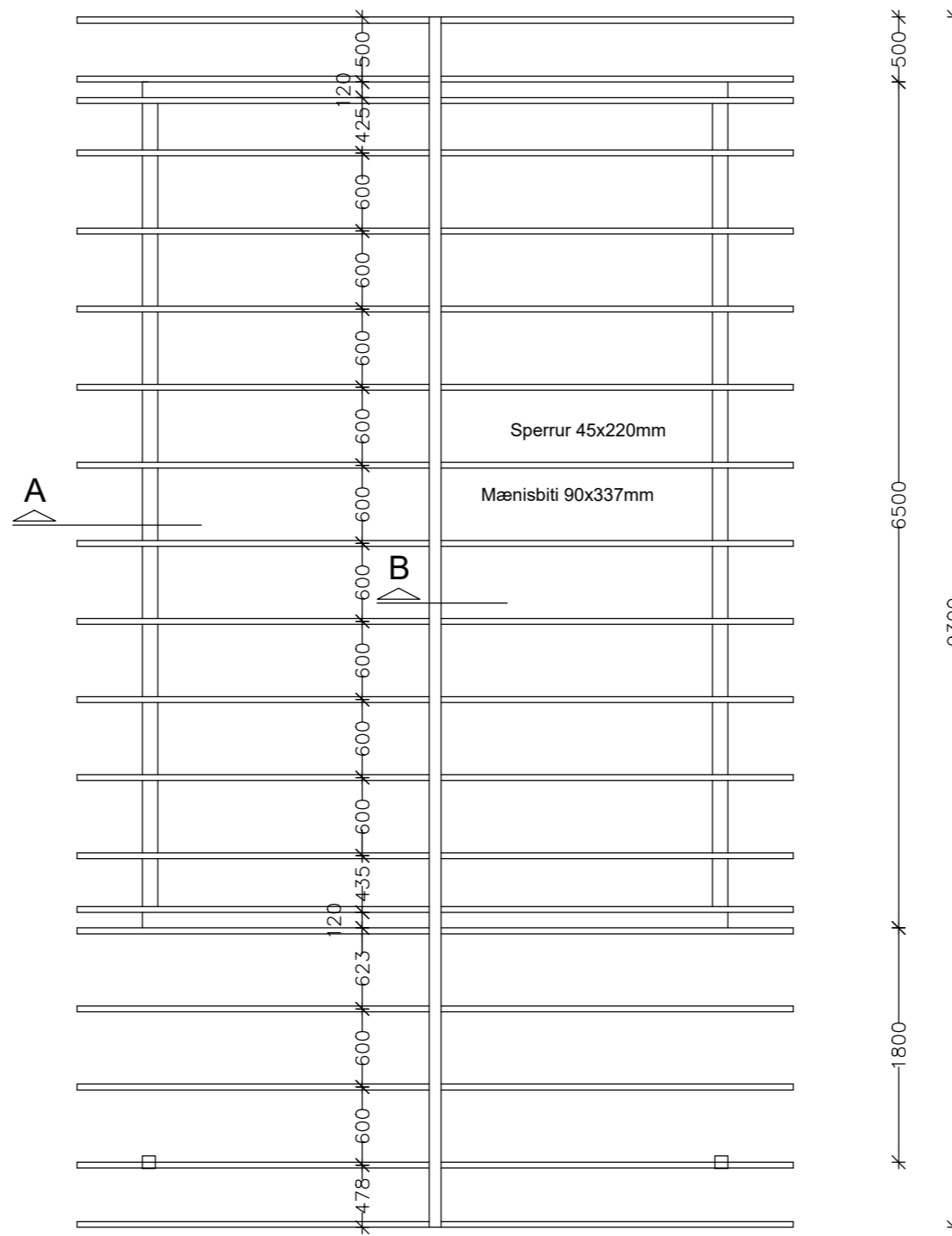


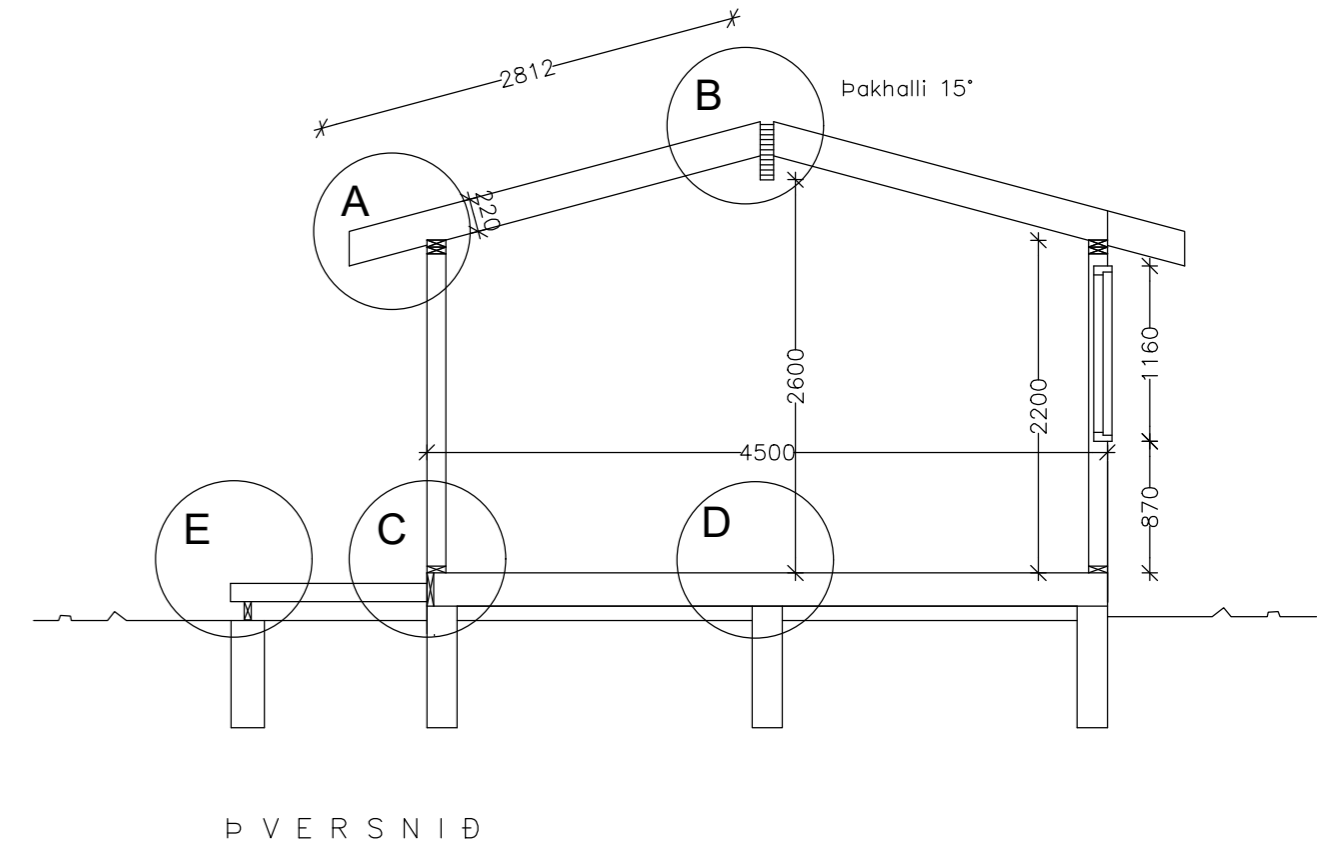
GÓLF M.K. 1/50



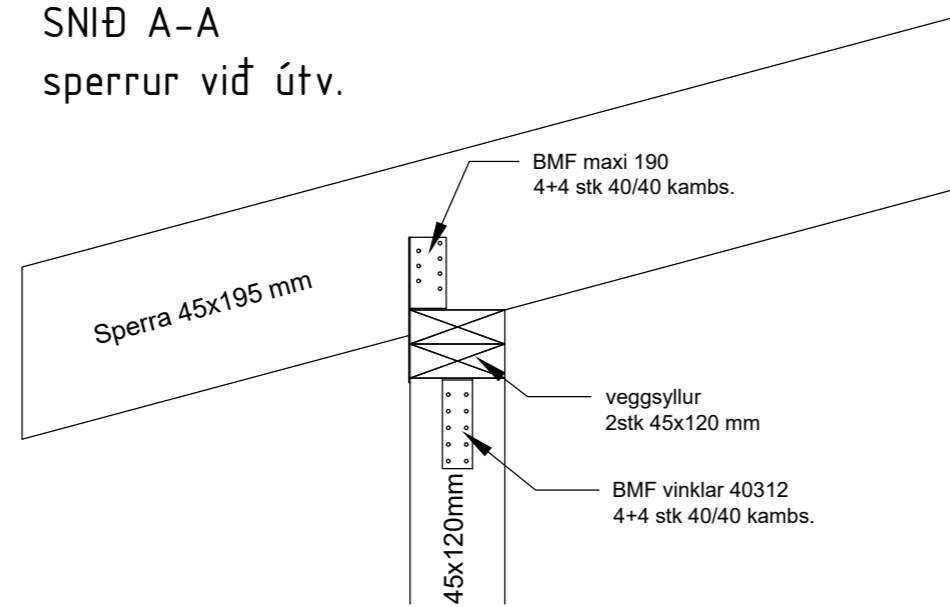
ÞAK M.K. 1/50



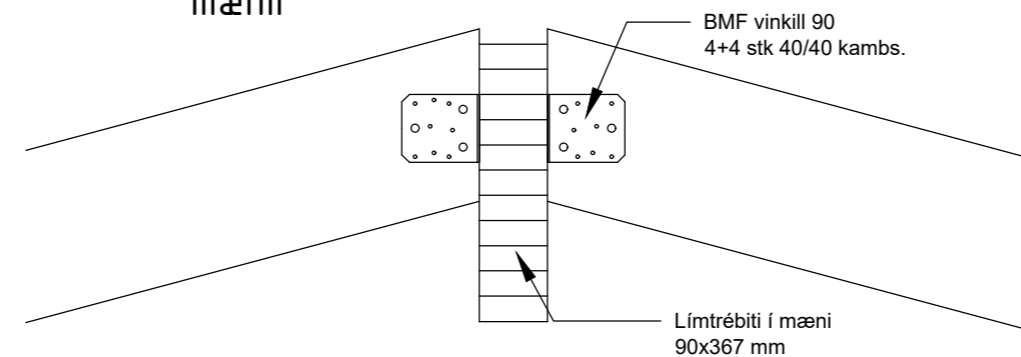
SNIÐ M.K. 1/50



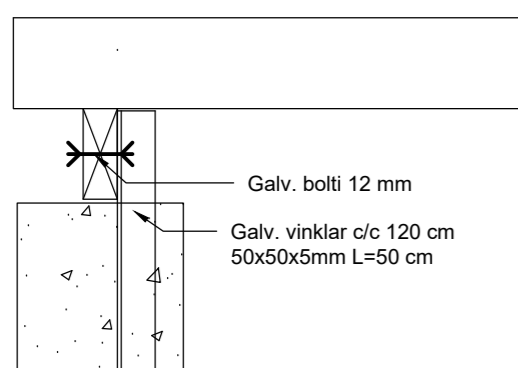
SNIÐ A-A
sperrur við útv.



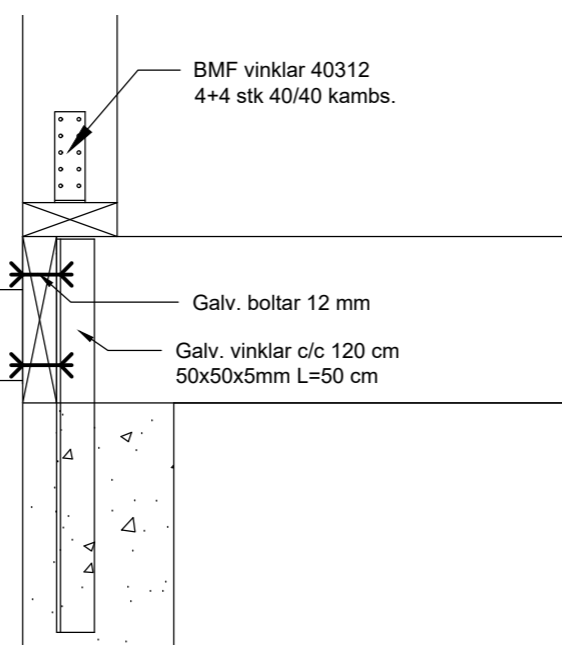
SNIÐ B-B
mænir



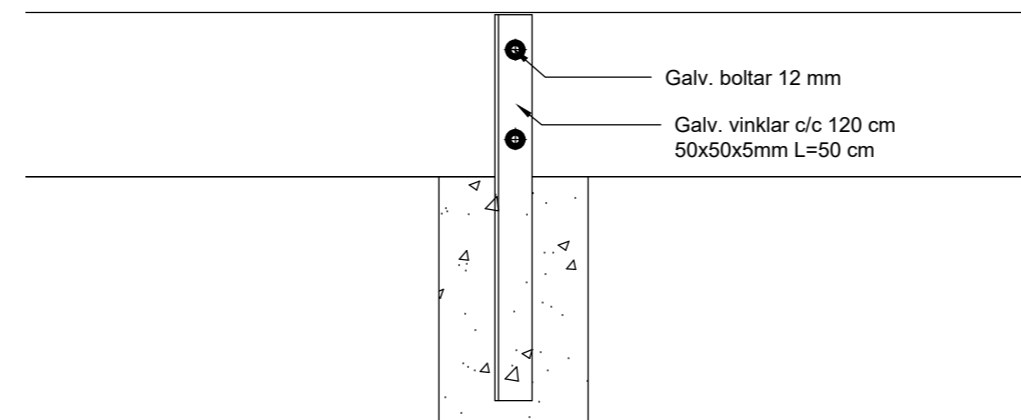
SNIÐ E-E
súlur undir palli



SNIÐ C-C
gólf við útv.



SNIÐ D-D
gólf við millisökkul



SKÝRINGAR:

Undirstöður eru steypar súlur (d=220mm) grafnar niður á fastan botn.

Sökkjar járnbandist með grind K10 c/c 300. 2K12 efst og neðst.

Grindur skal klæða með 12 mm rakalímdum og fúavörðum krossviði skrufað með 4/40 skrúfum c/c 150 á hornum c/c 200 annars staðar.

Þaksperrur, mænisbitar og gólfbitar eru 45x195mm í gæðaflokki T2

Grindur útveggja eru 45x120mm og burðarveggur undir mæni er 45x95mm. í gæðaflokki T1

Allur saumur og tengi sé galvanhúðað